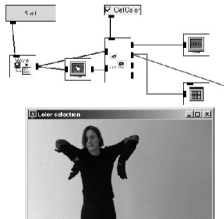


Elbowroom

EVE DENT & read/write/fold Architecture



EVE DENT has worked as an artist since 1998 using live performance and photography to create body installations that arise out of her interactions with architectural structures and spaces, in an exploration of the threshold between bodily self and material thing. She has performed and been commissioned widely both in the UK and Europe. Her continuing Anchor Series - ongoing site-specific improvisations tailored to each new building or space she encounters - has most recently taken her to the Victoria and Albert Museum and to Finland and Switzerland.

read/write/fold Architecture is a multidimensional manufacturing and distribution system for generative architecture. read/write/fold Architecture allows the user to write - read - modify - print and assemble scale models of generative architectural forms and spaces. The basic architectures are transcribed from the printed page before being activated with live data to generate new dynamic structures. These new forms can be viewed as virtual 3D models, before being printed and folded to construct 'real' 3D models. The read/write/fold Architecture exists somewhere between the data/code that defines them, the printed page that displays them and the 3D model (virtual and real) that manifests them. read/write/fold Architecture is a collaborative project from: MODEL, Arch-OS and the Institute of Digital Arts and Technology. Ideas manufactured by: Adam Montandon, Mike Phillips and Chris Speed. <http://www.arch-os.com>

Elbowroom + read/write/fold
is the result of a collaboration
between the performance artist
Eve Dent & Arch-OS.

Elbowroom is *Eve Dent's*
performative exploration of the
Portland Square Building,
[home of *i-DAT* and *Arch-OS*].
The extremities of her elbows
define the boundaries between her
physical body and the body
of the building as they moved
within the architectural space.

The 4 dimensional points of her
elbows [in space through time]
were captured using a
motion detection system.
The generated data coordinates
were used to define a new
multidimensional model of *Eve's*
temporal interaction with the
architecture of the building.

This model can be manipulated
in the 3D space of the
Elbowroom + read/write/fold
'engine' on the *OTP DVD*.
Users can insert alternative data
coordinates to further manipulate the
space and time of the
Elbowroom performance.

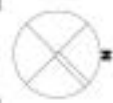
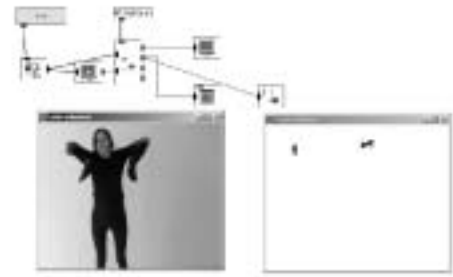
The 3D models can be output to
the 2 dimensions of the printed page
and folded to recreate 3D
representations of the 4D
Elbowroom performance.

read/write/fold architecture
exists somewhere between the
data/code that defines them,
the printed page that displays them
and the 3D model (virtual and real)
that manifests them.

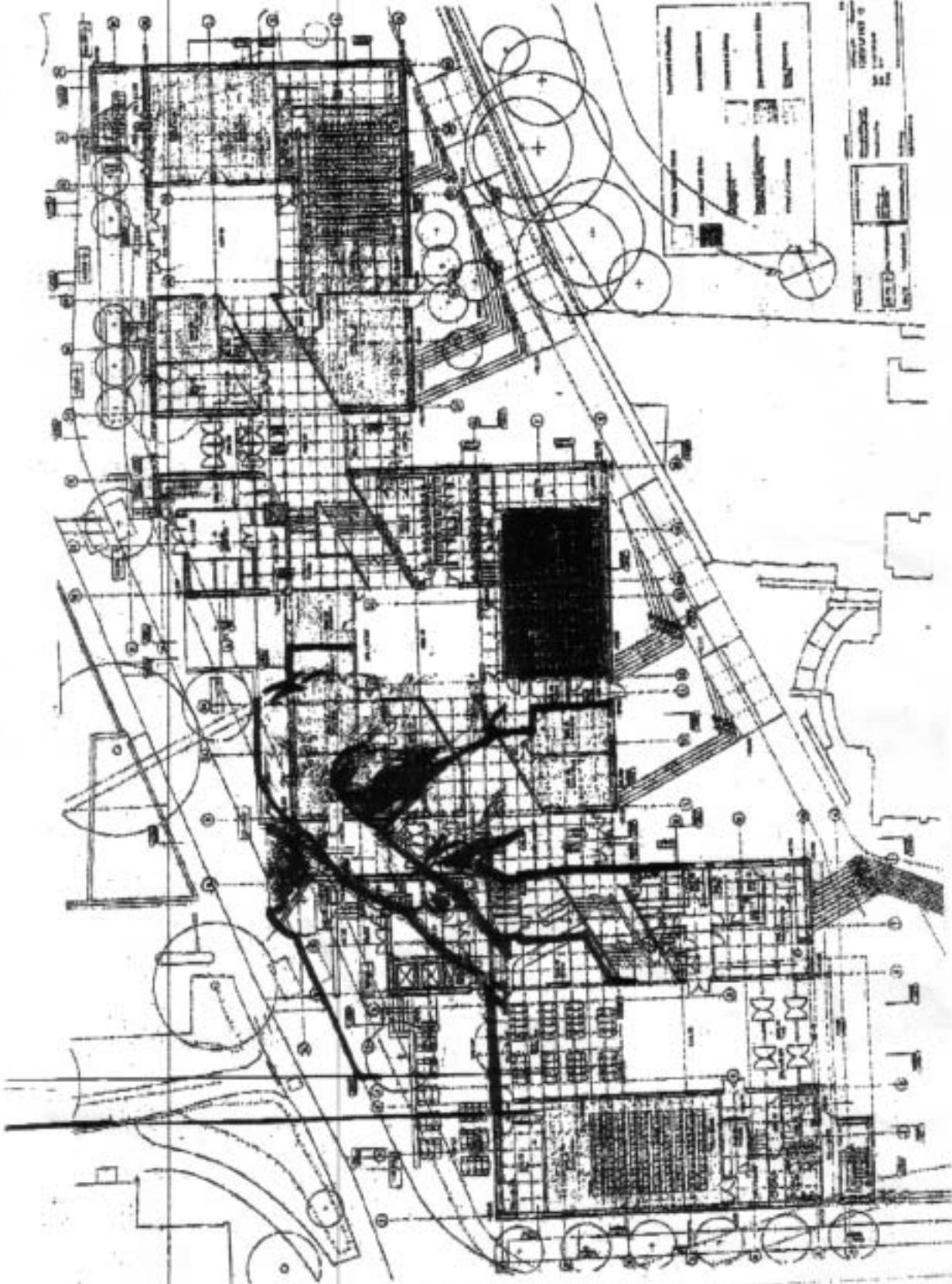
The processes of translation,
transposition and modification
employed by the compiler / application
enables the user to re-enact and
reinterpret the original
Elbowroom performance
within the digital space of the
read/write/fold engine.

read/write/fold architectures
can be printed to scale for precise
fitting and tailoring to an individuals
dimensional requirement.

Elbowroom + read/write/fold
is a collaborative project from
Eve Dent and *Arch-OS*
[*Adam Montandon, Mike Phillips*
& *Chris Speed*]
[www.arch-os.com]



Elbowroom + read/write/fold
01
read/write/fold
Elbowroom + r/w/f - Intro...
Copyright © 2004 Arch-OS



Elbowroom +
read/writer/fool

Sheet # 02

Date: 11/26/84

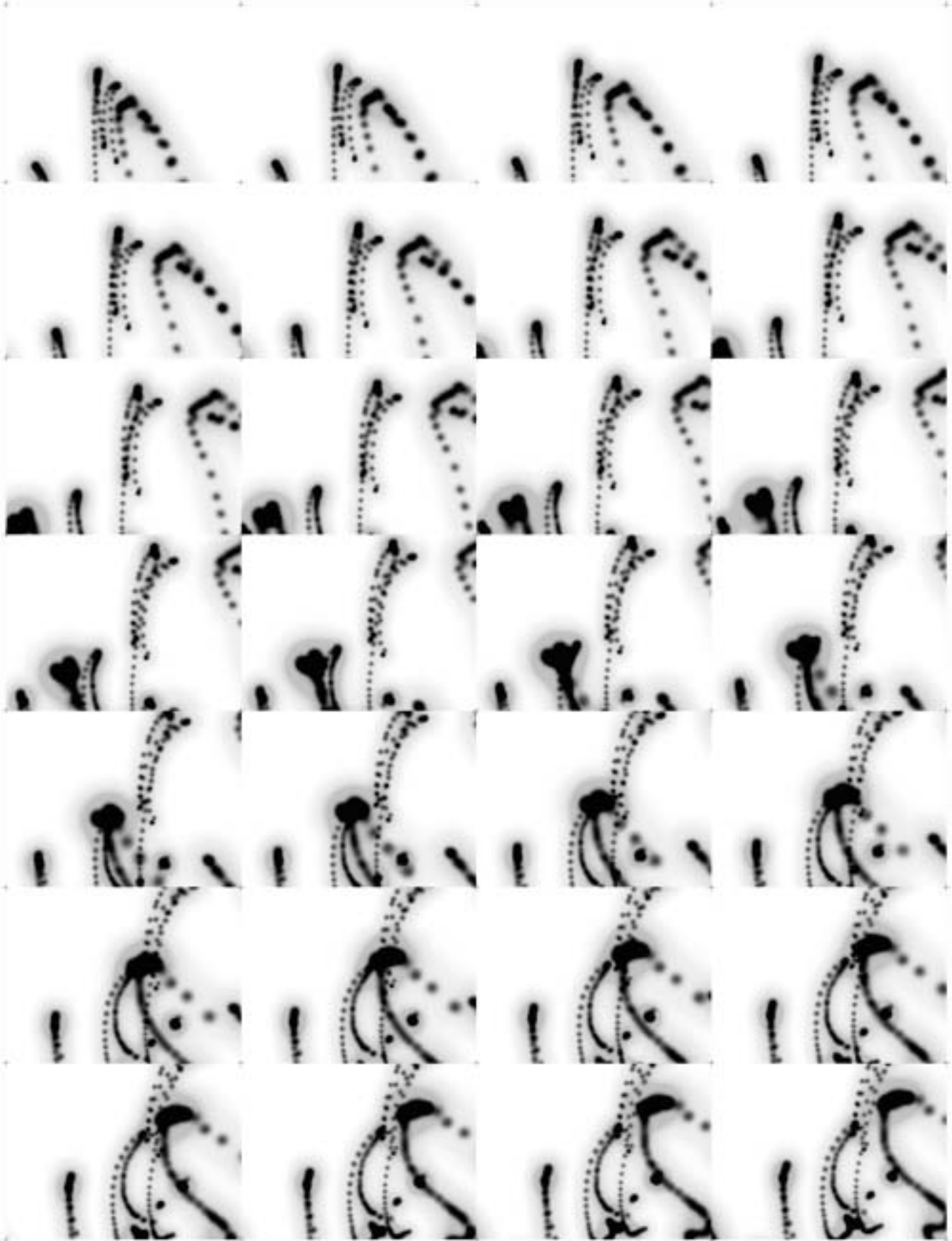
Client: The Elbowroom in PSQ

Scale: 1/8" = 1'-0"

Original printed on 11/26/84



XXXXXXXXXXXXXXXXXXXX



Elbowroom +
readwritefold
November 2011 - 1.04.12

Drawing # 03
Date: 25.04.2011
Open data trails (elbows)
Scale: 1:1
Copyrighted © 2011, 2012



Open the **read/write/fold** engine from the DVD and enter coordinates from the **Elbowroom** data, also found on the DVD.



Insert alternative data coordinates to further manipulate the space and time of the **Elbowroom** performance.



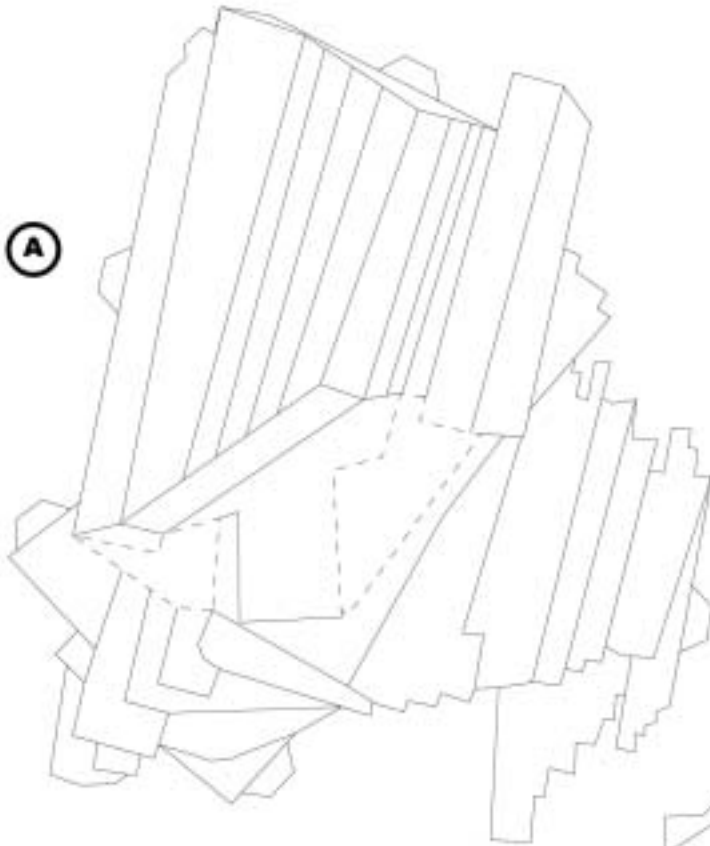
Use the **Reset** button to view the original **Elbowroom** performance as a 3D model, and the **Print** button to print out models.



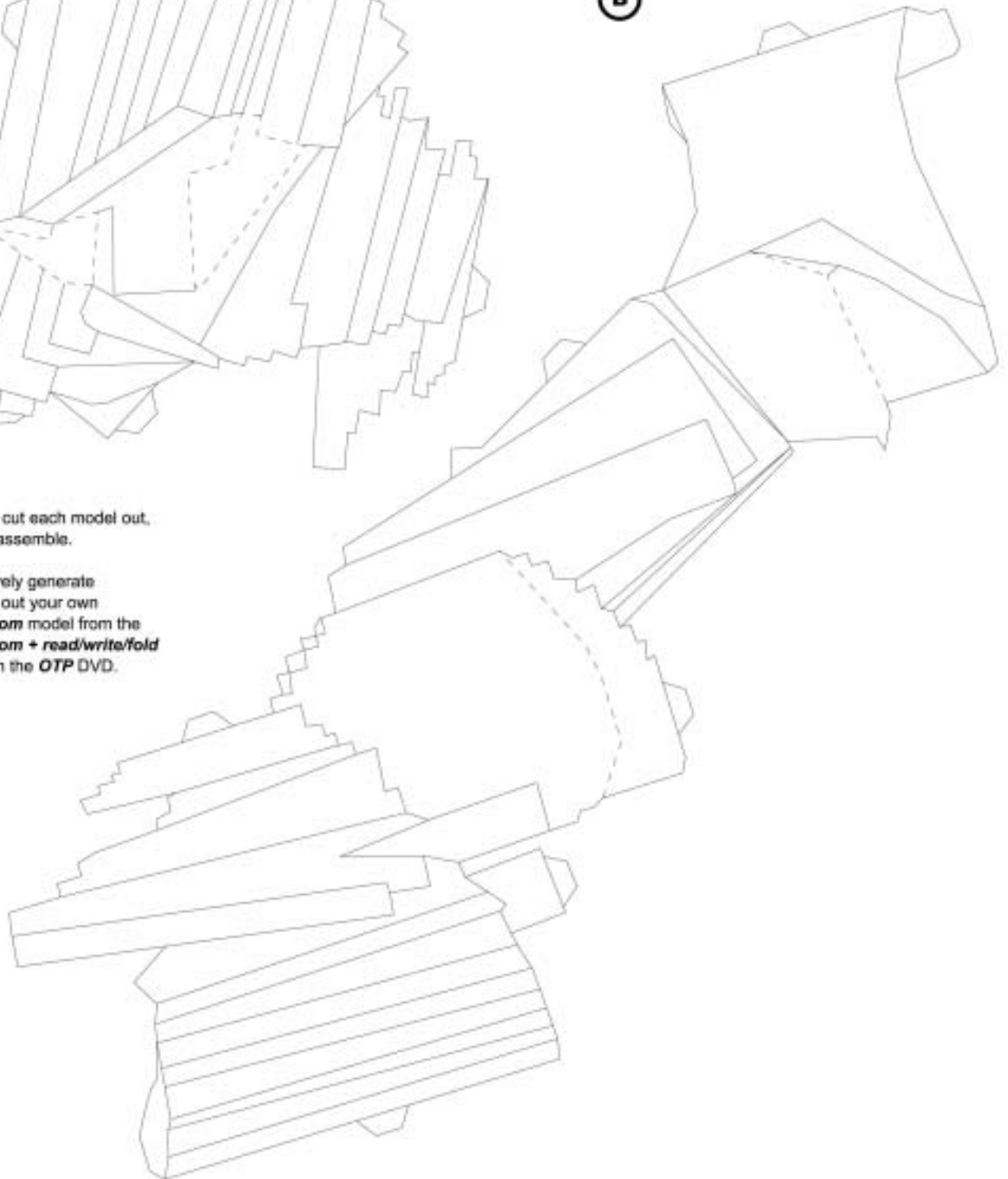
110710 110 220 412 200
110901 110 220 412 200
110914 110 220 412 200
110927 110 220 412 200
110940 110 220 412 200
110953 110 220 412 200
110966 110 220 412 200
110979 110 220 412 200
110992 110 220 412 200
111005 110 220 412 200
111018 110 220 412 200
111031 110 220 412 200
111044 110 220 412 200
111057 110 220 412 200
111070 110 220 412 200
111083 110 220 412 200
111096 110 220 412 200
111109 110 220 412 200
111122 110 220 412 200
111135 110 220 412 200
111148 110 220 412 200
111161 110 220 412 200
111174 110 220 412 200
111187 110 220 412 200
111200 110 220 412 200
111213 110 220 412 200
111226 110 220 412 200
111239 110 220 412 200
111252 110 220 412 200
111265 110 220 412 200
111278 110 220 412 200
111291 110 220 412 200
111304 110 220 412 200
111317 110 220 412 200
111330 110 220 412 200
111343 110 220 412 200
111356 110 220 412 200
111369 110 220 412 200
111382 110 220 412 200
111395 110 220 412 200
111408 110 220 412 200
111421 110 220 412 200
111434 110 220 412 200
111447 110 220 412 200
111460 110 220 412 200
111473 110 220 412 200
111486 110 220 412 200
111499 110 220 412 200
111512 110 220 412 200
111525 110 220 412 200
111538 110 220 412 200
111551 110 220 412 200
111564 110 220 412 200
111577 110 220 412 200
111590 110 220 412 200
111603 110 220 412 200
111616 110 220 412 200
111629 110 220 412 200
111642 110 220 412 200
111655 110 220 412 200
111668 110 220 412 200
111681 110 220 412 200
111694 110 220 412 200
111707 110 220 412 200
111720 110 220 412 200
111733 110 220 412 200
111746 110 220 412 200
111759 110 220 412 200
111772 110 220 412 200
111785 110 220 412 200
111798 110 220 412 200
111811 110 220 412 200
111824 110 220 412 200
111837 110 220 412 200
111850 110 220 412 200
111863 110 220 412 200
111876 110 220 412 200
111889 110 220 412 200
111902 110 220 412 200
111915 110 220 412 200
111928 110 220 412 200
111941 110 220 412 200
111954 110 220 412 200
111967 110 220 412 200
111980 110 220 412 200
111993 110 220 412 200
112006 110 220 412 200
112019 110 220 412 200
112032 110 220 412 200
112045 110 220 412 200
112058 110 220 412 200
112071 110 220 412 200
112084 110 220 412 200
112097 110 220 412 200
112110 110 220 412 200
112123 110 220 412 200
112136 110 220 412 200
112149 110 220 412 200
112162 110 220 412 200
112175 110 220 412 200
112188 110 220 412 200
112201 110 220 412 200
112214 110 220 412 200
112227 110 220 412 200
112240 110 220 412 200
112253 110 220 412 200
112266 110 220 412 200
112279 110 220 412 200
112292 110 220 412 200
112305 110 220 412 200
112318 110 220 412 200
112331 110 220 412 200
112344 110 220 412 200
112357 110 220 412 200
112370 110 220 412 200
112383 110 220 412 200
112396 110 220 412 200
112409 110 220 412 200
112422 110 220 412 200
112435 110 220 412 200
112448 110 220 412 200
112461 110 220 412 200
112474 110 220 412 200
112487 110 220 412 200
112500 110 220 412 200
112513 110 220 412 200
112526 110 220 412 200
112539 110 220 412 200
112552 110 220 412 200
112565 110 220 412 200
112578 110 220 412 200
112591 110 220 412 200
112604 110 220 412 200
112617 110 220 412 200
112630 110 220 412 200
112643 110 220 412 200
112656 110 220 412 200
112669 110 220 412 200
112682 110 220 412 200
112695 110 220 412 200
112708 110 220 412 200
112721 110 220 412 200
112734 110 220 412 200
112747 110 220 412 200
112760 110 220 412 200
112773 110 220 412 200
112786 110 220 412 200
112799 110 220 412 200
112812 110 220 412 200
112825 110 220 412 200
112838 110 220 412 200
112851 110 220 412 200
112864 110 220 412 200
112877 110 220 412 200
112890 110 220 412 200
112903 110 220 412 200
112916 110 220 412 200
112929 110 220 412 200
112942 110 220 412 200
112955 110 220 412 200
112968 110 220 412 200
112981 110 220 412 200
112994 110 220 412 200
113007 110 220 412 200
113020 110 220 412 200
113033 110 220 412 200
113046 110 220 412 200
113059 110 220 412 200
113072 110 220 412 200
113085 110 220 412 200
113098 110 220 412 200
113111 110 220 412 200
113124 110 220 412 200
113137 110 220 412 200
113150 110 220 412 200
113163 110 220 412 200
113176 110 220 412 200
113189 110 220 412 200
113202 110 220 412 200
113215 110 220 412 200
113228 110 220 412 200
113241 110 220 412 200
113254 110 220 412 200
113267 110 220 412 200
113280 110 220 412 200
113293 110 220 412 200
113306 110 220 412 200
113319 110 220 412 200
113332 110 220 412 200
113345 110 220 412 200
113358 110 220 412 200
113371 110 220 412 200
113384 110 220 412 200
113397 110 220 412 200
113410 110 220 412 200
113423 110 220 412 200
113436 110 220 412 200
113449 110 220 412 200
113462 110 220 412 200
113475 110 220 412 200
113488 110 220 412 200
113501 110 220 412 200
113514 110 220 412 200
113527 110 220 412 200
113540 110 220 412 200
113553 110 220 412 200
113566 110 220 412 200
113579 110 220 412 200
113592 110 220 412 200
113605 110 220 412 200
113618 110 220 412 200
113631 110 220 412 200
113644 110 220 412 200
113657 110 220 412 200
113670 110 220 412 200
113683 110 220 412 200
113696 110 220 412 200
113709 110 220 412 200
113722 110 220 412 200
113735 110 220 412 200
113748 110 220 412 200
113761 110 220 412 200
113774 110 220 412 200
113787 110 220 412 200
113800 110 220 412 200
113813 110 220 412 200
113826 110 220 412 200
113839 110 220 412 200
113852 110 220 412 200
113865 110 220 412 200
113878 110 220 412 200
113891 110 220 412 200
113904 110 220 412 200
113917 110 220 412 200
113930 110 220 412 200
113943 110 220 412 200
113956 110 220 412 200
113969 110 220 412 200
113982 110 220 412 200
113995 110 220 412 200
114008 110 220 412 200
114021 110 220 412 200
114034 110 220 412 200
114047 110 220 412 200
114060 110 220 412 200
114073 110 220 412 200
114086 110 220 412 200
114099 110 220 412 200
114112 110 220 412 200
114125 110 220 412 200
114138 110 220 412 200
114151 110 220 412 200
114164 110 220 412 200
114177 110 220 412 200
114190 110 220 412 200
114203 110 220 412 200
114216 110 220 412 200
114229 110 220 412 200
114242 110 220 412 200
114255 110 220 412 200
114268 110 220 412 200
114281 110 220 412 200
114294 110 220 412 200
114307 110 220 412 200
114320 110 220 412 200
114333 110 220 412 200
114346 110 220 412 200
114359 110 220 412 200
114372 110 220 412 200
114385 110 220 412 200
114398 110 220 412 200
114411 110 220 412 200
114424 110 220 412 200
114437 110 220 412 200
114450 110 220 412 200
114463 110 220 412 200
114476 110 220 412 200
114489 110 220 412 200
114502 110 220 412 200
114515 110 220 412 200
114528 110 220 412 200
114541 110 220 412 200
114554 110 220 412 200
114567 110 220 412 200
114580 110 220 412 200
114593 110 220 412 200
114606 110 220 412 200
114619 110 220 412 200
114632 110 220 412 200
114645 110 220 412 200
114658 110 220 412 200
114671 110 220 412 200
114684 110 220 412 200
114697 110 220 412 200
114710 110 220 412 200
114723 110 220 412 200
114736 110 220 412 200
114749 110 220 412 200
114762 110 220 412 200
114775 110 220 412 200
114788 110 220 412 200
114801 110 220 412 200
114814 110 220 412 200
114827 110 220 412 200
114840 110 220 412 200
114853 110 220 412 200
114866 110 220 412 200
114879 110 220 412 200
114892 110 220 412 200
114905 110 220 412 200
114918 110 220 412 200
114931 110 220 412 200
114944 110 220 412 200
114957 110 220 412 200
114970 110 220 412 200
114983 110 220 412 200
114996 110 220 412 200
115009 110 220 412 200



A



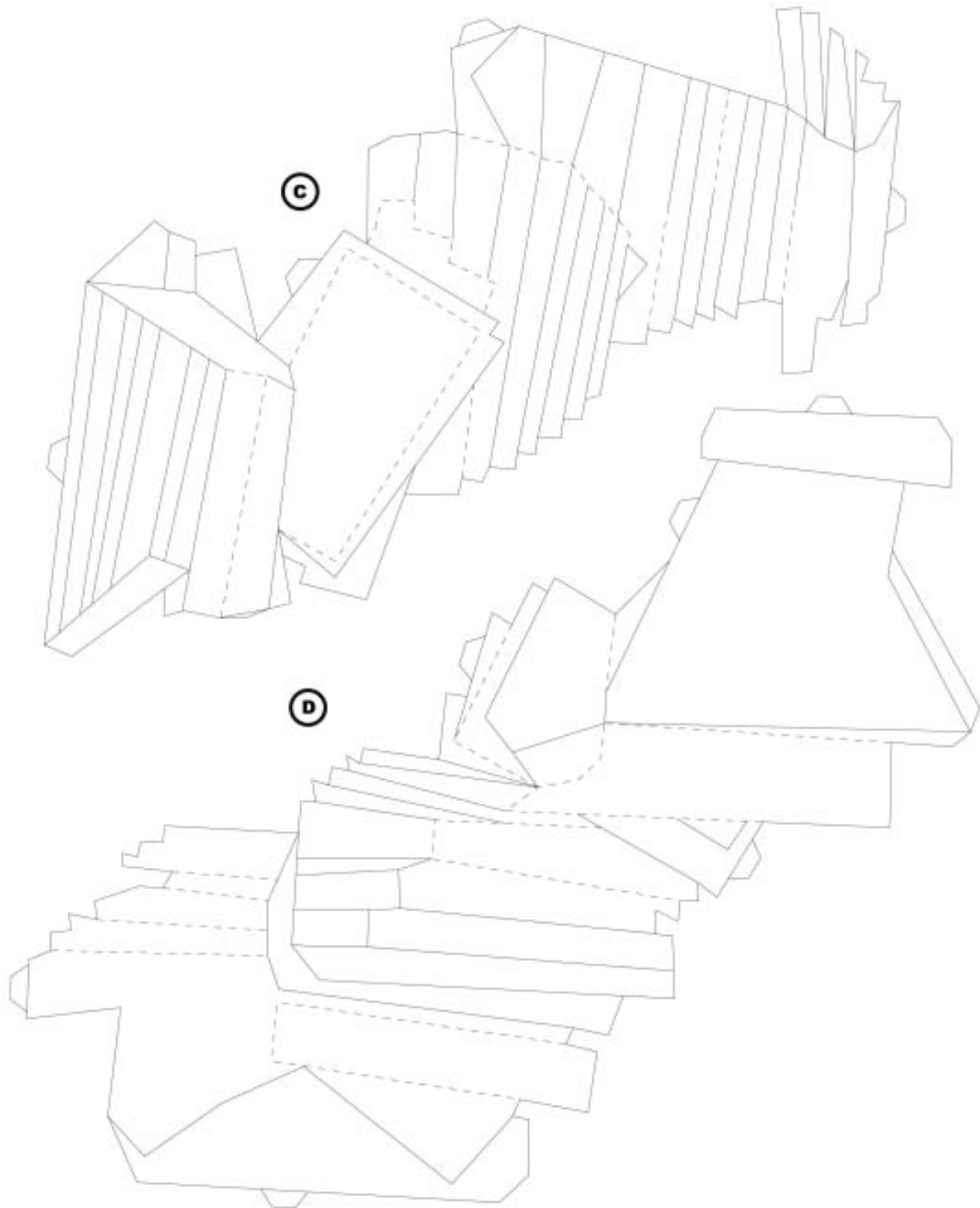
B



Carefully cut each model out,
fold and assemble.

Alternatively generate
and print out your own
Elbowroom model from the
Elbowroom + read/write/fold
engine on the *OTP* DVD.





Elbowroom +
readwritefold

Printed by readwritefold - San Francisco

Blanking # 05

Date: 2014.02.04

Object title: **fold**

Scale: 1

Original resolution: 300 x 300 dpi